

The Messenger

Summer 2015

The Newsletter of Christ Lutheran Church
Woodcliff Lake, New Jersey

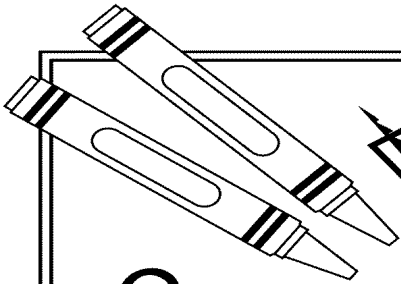


Love

is patient ♦
kind ♦ not envious ♦
not boastful ♦
not arrogant ♦
not rude ♦ does not insist
on its own way ♦
is not irritable or resentful ♦
does not rejoice in
wrongdoing ♦ rejoices in the
truth ♦ bears all things ♦
believes all things ♦
hopes all things ♦
endures all things ♦
never ends. ♦

1 Corinthians 13:4-8, NRSV [adapted]

The Church: Proudly Proclaiming Christ since A.D. 33




PUZZLE

Summer's gifts

Summer brings longer days, warmer nights and – for many people – time spent near water. Complete this puzzle to find out who's behind all those summertime joys.



Directions: Read Jeremiah 31:35 (NIV) below. Draw a around words describing God's actions. Draw an around words that describe day. Underline words that describe evening. Draw  under words that describe the ocean.

He who appoints the sun to shine by day,
who decrees the moon and stars to shine by night,
who stirs up the sea so that its waves roar...



Directions: Circle the capital letters. Then write them from left to right on the lines below to reveal God's name in this Bible verse.

i t T w H s p j E k e m a b L f g O h b c R d
e D q r s t c e a t o n a h f z z v u A w y L
a v n M q z l s k y z G u w H h m o T k j k Y





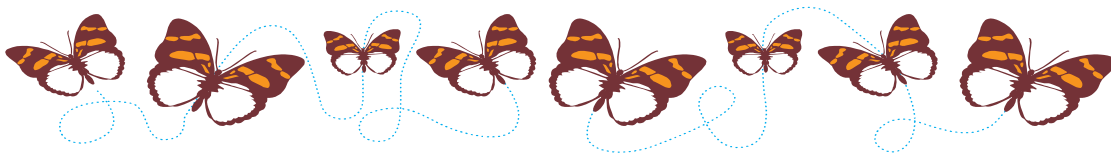
Answer: The LORD Almighty

Published by
Christ Lutheran Church
32 Pascack Road
Woodcliff Lake, NJ 07677

RETURN
SERVICE
REQUESTED

Nonprofit Org.
U.S. Postage
PAID
Paramus, NJ
Permit No. 596

Dated Material – Please Deliver Promptly



Like Us
facebook.com/clc4u 

Snap & Tag Us
instagram.com/clc4u 

Follow Us
[@christwoodcliff](https://twitter.com/christwoodcliff) 

www.clc4u.com

Pastor: The Rev. Marc Stutzel
Director of Music: Argine Safari
Director of Youth Choirs: David Scance
Musician: Fred Messner
Administrative Assistant: Doris Crouse

Did you know that . . .

The #1 toy in Germany is a 2" tall action figure of Martin Luther?



Earlier this year, infant toy maker Play Mobil manufactured a special Martin Luther toy to commemorate the upcoming 500th anniversary of the Reformation (2017). They research their target markets, sent in a product order request to their factory, and they made sure to manufacture just the right amount of toys so everyone who wanted one could get one. But then the toys hit the stores and the first run sold out in 72 hours. A new order was placed and sold out just as they came to market. These little toys are finally showing up in the United States and Social Media is full of images of #LittleLuther visiting churches, parks, hosting bible studies, and visiting the world. This little guy is all over the place - including my desk.

So why did Martin Luther take the toy universe by storm? I don't really know. But maybe the world knows something that we, as descendants of Luther's faith family, sometimes forget to see: that we have a gift, and are a gift, to the entire world. We're not teaching a faith that doesn't matter right now. We're not just talking about a perspective or experience that was relevant 500 years ago and no longer plays a roll now. Lutherans are never out of date; our perspective, point of view, and our faith-filled approach to Christianity matters and can make a difference in this world.

As Lutherans, we can sometimes forget the gifts we have. Our faith and our experience of Jesus on the Cross are not words in an old book. Christ is a living and breathing reality that lives through us. That's why we're packaging meals for our neighbors on Sunday, September 13. That's why we're going to spend 2016 reading the bible together as a congregation. And that's why we gather each Sunday, nourished by God's word and fed at Christ's table. We're part of the body of Christ. We're Christ's hands and feet in the world. We're claimed by a God who loves us too much to let us live on our own. So let's be like that Christ and go out and love, like that's the only thing we know how to do.

See you in church!
Pastor Marc



**God's work.
Our hands.**

Let's Get Our Hands Busy For Our Community

Sunday, September 13, God's Work/Our Hands Sunday is a national day of service sponsored by our denomination. Churches all over the country will be serving their communities in visible ways. We're partnering with Outreach, Inc. and other Lutheran churches in the area to feed families and children in Bergen County. On Sunday, September 13 from 1 to 5 pm, we're packaging Fortified Mac & Cheese meals. You won't want to miss this amazing event.

Q: What is the event like?

Outreach, Inc. provides all the raw materials to package these meals. We supply volunteers and fundraising. On the day of the event, long tables are placed nose-to-nose, forming a station where up to 12 volunteers gather to put the right amount of macaroni, cheese packets, and soy protein into 12.5 oz. packages. Each package feeds 6 (we tested and it really does feed six) with 36 packages to a box. These boxes will be picked up by Outreach and shipped to CFA. Volunteers sign up for a 2 hour shift that includes training, refreshments and work on the line. The age range to participate is from early elementary school through 92. There is something for everyone!

Q: Why This Mac & Cheese?

Mac & Cheese is one of the most popular items at food pantries. Kids (and families) love them. But unlike store bought Mac & Cheese, the kind we'll be packaging is fortified with 20 essential vitamins including Vitamin A, B12, C, and E. It's filled with protein and is only a fraction of what a box at the store would cost. If we just donated money, CFA could only buy enough for 20,000 meals. With the food we're providing families eat better and the CFA can feed more people than they could otherwise.

Q: Who benefits?

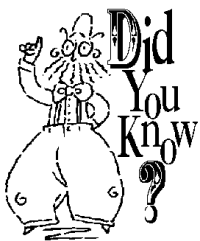
We're planning to give the meals to the Center for Food Action who will give these meals to families in our area and county. This is one way we can continue to fight hunger in our community while we continue to advocate for an end to all hunger in Northern Bergen County. We benefit by feeling good, knowing we're taking the first of many necessary steps to end hunger here in Bergen County.

Q: How to help?

1. Signup to volunteer at <http://www.signupgenius.com/go/20f0949acac2ea0fc1-gods>, or tell Pastor Marc you want to be a part of this event.
2. Donate! Each meal costs \$0.25 to put together and a package of six costs \$1.50. Thirty-six packages make a box. For \$54 you can provide food to 216 people. Instead of taking the family to Chili's or Applebee's this week, donate that to this program. Checks can be made out to Outreach, Inc. with "Christ Lutheran Church" or "God's Work/Our Hands" in the memo field.
3. Pray for us and the hungry in Northern New Jersey. Let's do what we can to make sure no one goes hungry in our neighborhoods.

Pastor Jon Wills of Advent in Wyckoff, who hosted the same event in January where over 92,000 meals were donated to the CFA, shared: "You had teenagers working alongside retirees who were laughing and smiling. It was people coming together from all walks of life. People who were working the assembly line actually stopped what they were doing to make a contribution, which meant we could make more meal packages. It was a miracle of 'loaves and fishes'."

God's Work, Our Hands. Join us!



... a family or group can sponsor a box of Mac & Cheese for only \$54? That is about the cost of a meal for four at family style restaurant. You could feed 216 hungry people with the same \$54. And most corporations will match your gift! Please look for more details in the coming weeks, on how your donation can go twice as far with a matching gift.

From the Steering Committee

On Tuesday, July 21 at 7:30 pm the God's Work/Our Hands Steering Committee will meet. We need your talents to make our Food Packaging Event the amazing experience it will be! Come out or speak to Pastor Marc (marc.stutzel@gmail.com) or Carla Hoenigmann (carlah716@cs.com).

President's Message

I hope your summer is providing you with plenty of time to relax and unwind. When you're around, we hope to see you at church this summer at our one service at 9:30. Please consider hosting one of the coffee hours afterwards. It's quite easy and informal and gives us all a chance to catch up with each other.

Thank You to all who attended our Special Congregational meeting June 21st. It was a busy day for us with Father's Day, youth graduation Sunday and the meeting. We were able to explain, discuss and vote on three Ricci applications and the amendment to our Constitution (to allow the option for email notifications for our Congregational meetings). I am happy to report that all items passed and the meeting only took 15 minutes!

We now have \$5,000 towards our goal of providing 40,000 meals to CFA (\$10,000 total cost). We are also funded the "Walk through the Bible" seminar (to be held in October) and a new TV and DVD player for the Sonshine room.

Regarding the notification preference you have for special congregational meetings, you can let the church office know your preference for future meeting notifications. It is your decision on what method works best for you.

Pastor Marc, Doris Crouse and I recently had the opportunity to meet with Pastor Jon of Advent Lutheran, Wyckoff. His church hosted the Outreach Mac & Cheese packaging event on Martin Luther King Day in January. They packed up over 92,000 meals in their eight hour day! We wanted to learn from him and understand what was important to make this day a success. He said they started the day with the expectation of packing about 70,000 meals and ended up doing over 92,000! The enthusiasm of the volunteers was contagious . . . he stated that the Holy Spirit surely was present as more people came to help, stayed to help and felt good about spending their time to solve a local problem. People liked this hands on way to feed the hungry and enjoyed the camaraderie of working together on the packing line. We hope you will join us and the other churches already on board as we work together on September 13th. Please stay tuned for more information coming your way this summer!

We will also provide matching gift information to you. Since Outreach, Inc. is a 501 (C) (3) charity, not a religious organization, most corporations will match your donation. Please see your HR department for details. We'll provide the contact information to you soon.

If you would like to join the organizing group, be a key volunteer or have any ideas, please share them with myself, Pastor Marc or anyone on Council.

Carla Hoenigmann; Carlah716@cs.com; 201-391-7843

New Horizons for Dear Friends

God Continues to Bless Us with Challenges to Help Us Grow

As we reflect on the past year with thanksgiving, it's hard not to look ahead and wonder what God has in store for us. We are filled with joy because of the love and dedication of our teachers, our new Pastor, faithful parents and a caring congregation, but we are also sad that we need to say "so long" to our dear friends, the Boettjer's and Ramhorst's who are moving to Atlanta. The Boettjer's and Ramhorst's have been such a vital part of our Church family with their loving hearts, generous spirits and faithful teaching. Sometimes it is hard to imagine how we will continue without their weekly presence here at our church. But continue we will, because it is God's will not ours that decides where the Spirit leads us. We all have new horizons ahead of us in which we will share the love of Jesus. The Boettjer's and Ramhorst's will settle into new church communities that will embrace their spiritual gifts, and we will graciously fulfill their missions and ours here at our church. We will all grow in faith, but we will still miss each other very much! We thank God that we have been a part of each other's lives, and we will continue to be blessed as we share in the Body of Christ . . . we are one, no matter where we live. Thanks to modern technology, we are looking forward to taking part in long-distance bible studies with our "satellite church" in Atlanta . . . stay tuned!

Janet Post

Christian Education Committee



**God's Speed,
Crystal, Cai, Chantal, Case, Dolores, Liane and Emily!
We Love You All!**

The Lord's Day

O day of rest! How beautiful, how fair,
How welcome to the weary and the old!
Day of the Lord! and truce to earthly care!
Day of the Lord, as all our days should be!
—Henry Wadsworth Longfellow

Formatted: Centered

CLCW is Busy Reaching Out



Trash & Treasure Funds at Work

The Property Committee has two major projects (partially funded by Christ Lutheran Church Women through Trash & Treasure and the Ricci Fund) going on currently. If you are near the Sonshine Room you will notice that the women's bathroom and the Sonshine kitchen are being renovated. We look forward to seeing the finished result!

Christine Badame

School Kit Items on Sale (Already!)

Remember how excited you were to buy your new school supplies to start the year? You can give a child that same feeling by watching sales and buying the following items:

Drawstring backpacks, about 14" x 27"

Box of 24 crayons

70-sheet spiral notebooks

12" rulers and scissors

Pencil sharpeners

Large erasers

Last year we were able to assemble 50 kits; let us see if we can beat that number. Please place your items into the basket in the Narthex.

Bless you for helping to put some joy into a child's life.

Travelers of All Seasons

Grandmother's Cupboard in Wayne needs those small toiletry items you find in hotel bathrooms. Last year in December they distributed almost 500 Blessing Bags to the homeless in three different locations. In 2014 our Knit 1 Purl 2 group donated 40 hats for the bags. This year we have a basket in the narthex to deposit those toiletry items you don't use or need.

We are blessed to be able to travel; remember those who aren't able to.

JoAnn Sallo

Save the date--for the Women's Weekend at Koinonia!!

This year CLCW has scheduled the weekend of Friday, October 2nd - Sunday, October 4th as the Women's Retreat weekend. More details to follow in the fall. Think about joining us in the renovated two family cabin for fun, food and a respite from your busy life here in Bergen County!

Some great cooks among us – try this!

Rice Pudding

Recipe from the kitchen of Suzanne Desmet

6 cups whole milk

$\frac{3}{4}$ cup long grain rice (Carolina Long Grain)

3 egg yolks

2 tsp. vanilla – or almond extract (Watch for nut allergies.)

$\frac{3}{4}$ cup sugar

1 cup heavy cream

Cinnamon

- 1) Rinse pot in cold water – do not dry. Pour in milk.
- 2) Bring milk to boil, add rice, stir, and lower heat.
- 3) Cook uncovered for about 50 minutes until rice is tender. (I sometimes shorten to 45+ minutes.)
- 4) In separate bowl mix yolks, vanilla, sugar and cream together.
- 5) You may add a dash of salt, I do not.
- 6) After rice-milk mixture has simmered for 45-50 minutes, remove mixture from heat. Add in cream – egg mixture. Stir.
- 7) Return to flame. Heat to the boil. Then pour into bowl. Dust with cinnamon.
- 8) Chill *uncovered* for several hours.

Save These Dates . . .



All Sunday worship services during July and August will be at 9:30 am.

- The 19th – Worship with Holy Communion. The Rev. Margaret Niederer will preach and preside



- The 2nd – Holy Baptism and Dedication of new silver communion serving pieces given in memory of Marie Roller
- The 9th – Hymn Sing and guest speaker Kristyn Ulanday
- The 10th-14th – Vacation Bible School
- The 30th – Guest speaker Jane Tomney



- Saturday, the 24th Walk Thru the Bible Event
An interactive exploration of the Old Testament.
You don't want to miss this.
Visit www.walkthru.org to see what this event will be like.
More information coming soon.

From the Special Gifts Committee

I am pleased to announce that at the Special Congregational Meeting in June the congregation approved all 3 project recommendations for funding. This included

1. The "God's Work/Our Hands" project for CFA which provided the initial seed money (50%) for a project to package 40,000 Mac & Cheese meals at CLC on September 13th. All packaged meals will be donated to local food banks.
2. The *Walk thru the Bible* educational seminar. CLC will host a live Bible presentation to discover more about why the Bible matters and how to include it in our daily lives.
3. A new TV and DVD player for the church.

The Special Gifts Disbursement Committee still needs your help. We expect to receive a check this summer from the Dominick and Anna Ricci Foundation for as much as \$60,000. The committee needs some new ideas for spending it. So download an application from the CLC website or pick one up from the mailboxes near the office and return the completed form to the Committee's mailbox. The deadline for any new applications which will be voted on at the 2016 Annual Meeting is November 1, 2015, but the committee will be meeting later this summer so don't procrastinate. (In order to be considered the application must be signed by a member of Council.)

Remember, per our charter we must allocate at least 10% of the monies received from the Ricci Foundation in each of the following areas.

1. Outreach Ministry or Benevolences to local Community or worldwide
2. Special Congregational Ministries
3. Capital Improvement or Asset Replacement

Bill Hoenigmann
Special Gifts Disbursement Committee





Meet the Mutual Ministry Team

We'd like to remind you that the Mutual Ministry team is actively meeting and present if you need us. Mutual Ministry tends to the relationship between pastor and people. Mutual Ministry grows Christ's ministry in this place by tending to our relationships so we can fulfill our call to spread the good news of Jesus Christ and God's love into our neighbor and community. The committee regularly meets to review the congregation's goals, the goals of the pastor, and how the work of the congregation and pastor are fulfilling the mission of the church. Concerns, comments and thoughts brought to the committee by members of the congregation are addressed as well.

Who is on the Mutual Ministry Committee?

Meredith Drobinske, Council-Person-at-Large (micd913@aol.com)

Linda Calise (lcalilady@verizon.net)

Heather Henry (ha_henry@msn.com)

Rich Osenbruck (richose@aol.com)

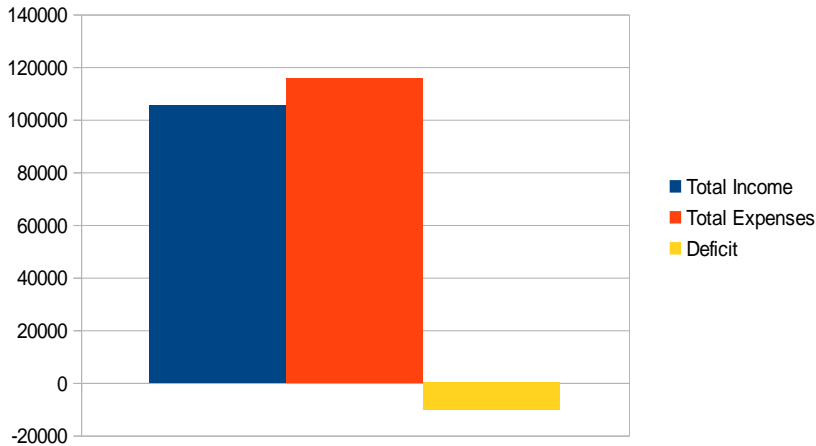
Rev. Marc A. Stutzel, Pastor (marc.stutzel@gmail.com)

How Can I Contact Members of the Committee?

There are multiple ways to contact members of the committee. Besides talking to them directly, each can be emailed at the above addresses. There is also a mailbox by the front office where notes can be left.

Please note that the committee will uphold high levels of confidentiality to ensure that all voices are respected and heard. We do ask that all concerns or comments not be anonymous. By attaching your name and information to a concern, we'll be able to properly follow up and make sure that a resolution is reached.

Update from the Finance Committee



Through May, the total paid for all expenses was \$115,690 and donations and other income received was \$105,291, resulting in a shortfall of \$10,399. The church counts on your donations to meet its expenses.

Thank you, from the Finance Committee

A Brief Stewardship Message

Remember the church during your summer vacation. You might be on vacation, but we are still working. One idea is to set us up as an automatic payment thru your bank's electronic payment service. Most banks can send a check to anyone you ask them to, so ask them to send a check to Christ Lutheran. I find it's a great way to fulfill our weekly pledge.

Have a great summer and we will see you in the fall.

William Daub

The Care Committee



“Summer time and the living is easy”, but not for hungry families and people living in poverty. We hope you will remember to bring your donated food items to the narthex on Sunday mornings. Your donations of food and money enable The Center For Food Action to offer a helping hand to those in need. Checks should be made payable to the CFA and placed in the offering plate. All food items are delivered to the CFA by Care members.

The Care Committee will take its annual sabbatical July and August, returning to its normal schedule September 8th at 9:30 AM in the Sonshine Room. We need a few new faces and new ideas to help us with our commitment to help those in our congregation and community. So, if you are available on that day, please join us.

As well as serving, we also manage to enjoy lunch out occasionally. And on meeting days the coffee pot is always on served with delicious refreshments. It’s a great way to fellowship with one another and serve those who are in need of help.

Mae Hulburt

A Prayer of St. Augustine

God of our life,
there are days when the burdens we carry
chafe our shoulders and weigh us down;
when the road seems dreary and endless,
the skies gray and threatening;
when our lives have no music in them,
and our hearts are lonely,
and our souls have lost their courage.
Flood the path with light, turn our eyes to where
the skies are full of promise;
tune our hearts to brave music;
give us the sense of comradeship
with heroes and saints of every age;
and so quicken our spirits
that we may be able to encourage
the souls of all who journey with us
on the road of life, to your honor and glory.



**Join us on Sunday, September 13th to help pack 40,000 meals for hungry people here in Bergen County!
We will be participating in the ELCA day of service at Christ Lutheran Church in Woodcliff Lake, New Jersey!**

The What: Packaging fortified & healthy mac & cheese meals

The How: Partnering with community & 5 other ELCA churches

The Numbers: 40,000 meals & 160 volunteers

The Time: 12:30 to 5 pm

(shifts from 12:30 to 3, 2:30 to 5, 4 to 5:30 pm+)

Sign up by visiting: <http://www.signupgenius.com/go/20f0949acac2ea0fc1-gods>

or talking to Pastor Marc!

Want To Give?

You can help feed 216 people in Bergen County. Sponsor a box for \$54, feeding many different families and children in our neighborhood! Fill out the form below and return with your payment to the church office or the special donation box in the narthex (entrance to the church).

Make all checks payable to Outreach, Inc.

Add "Christ Lutheran Church" to the Memo Field

[] YES! I will sponsor a box

or

[] I will donate \$ _____ to this incredible event

Name: _____

Address: _____

Email: _____

Phone: () _____

If your company will match your gift, please use the following contact info:

Outreach, Inc., 301 Center St., P. O. Box 361, Union, IA 50258

Contact to confirm is Ted Swartwood at ted@outreachprogram.org